



CD2-TDC-01



CD2-TDC-02



CD2-TDC-03

Click For:

» Quotes

» Stock Check

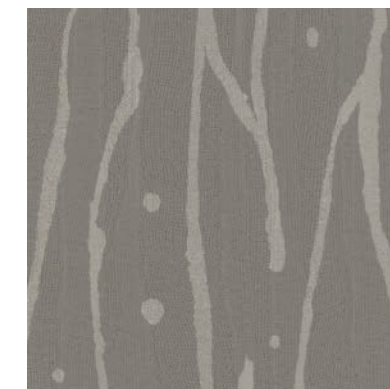
» Catalogs

» Documents

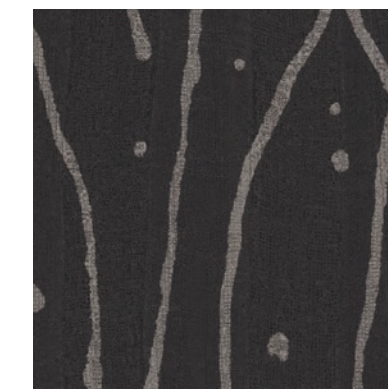
» Samples



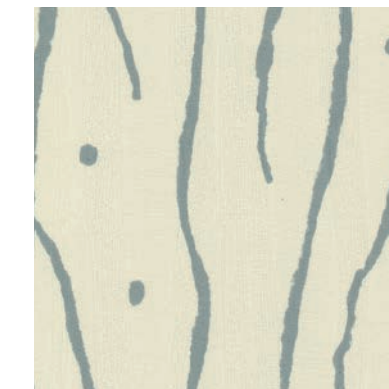
CD2-TDC-04



CD2-TDC-05



CD2-TDC-06

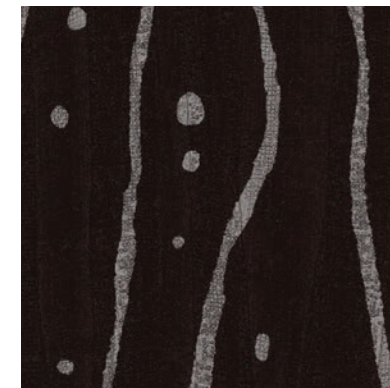


CD2-TDC-07



Tidal Creek

colour & design



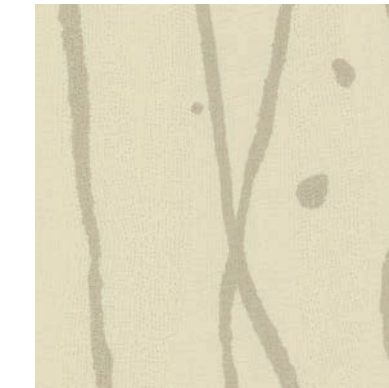
CD2-TDC-08



CD2-TDC-09



CD2-TDC-10



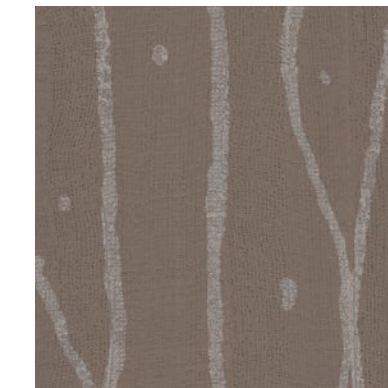
CD2-TDC-11



CD2-TDC-12



CD2-TDC-13



CD2-TDC-14



Spec Data



More from Colour & Design



All Solutions

Made in the U.S.A.

All Colors

Weight: Type II 20 oz | Width: 52"/54" | Backing: Non-Woven | Match: Reversible Match Pattern | Repeat: 52" H x 24" V
Low VOC | Aqua-Clear | Fire Rating: Class A | Flame Spread: 10 | Smoke Development: 10 | 5 Year Warranty Against Manufacturing Defects